

Janma Prawrti 1
Pusat Dokumentasi
Dinas Kebudayaan Provinsi Bali

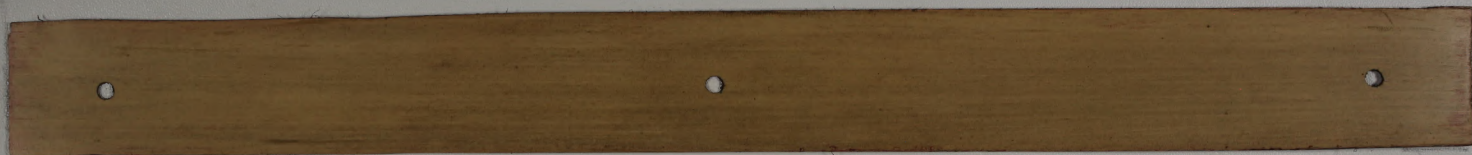


7	1
	A

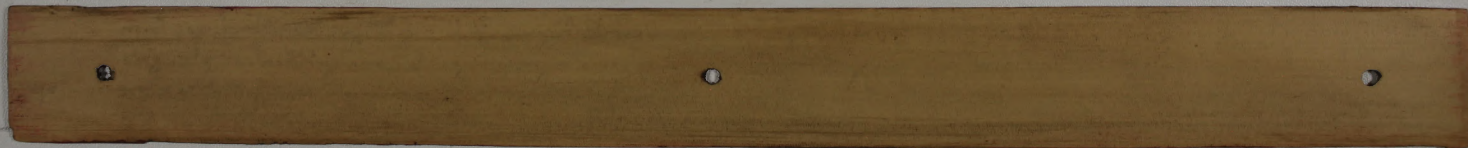


Janma Prawrti 1
Pusat Dokumentasi
Dinas Kebudayaan Provinsi Bali

3	1
	B



3	2
	A



Janma Prawrti 1
 Pusat Dokumentasi
 Dinas Kebudayaan Provinsi Bali

2
B

Handwritten text on a palm leaf manuscript strip, consisting of two columns of Balinese script.

3
A

Handwritten text on a palm leaf manuscript strip, consisting of two columns of Balinese script.

Janma Prawrti 1
Pusat Dokumentasi
Dinas Kebudayaan Provinsi Bali

3	3
	B

Handwritten text on a palm leaf manuscript strip, consisting of two columns of Balinese script.

4	4
	A

Handwritten text on a palm leaf manuscript strip, consisting of two columns of Balinese script.

Janma Prawrti 1
 Pusat Dokumentasi
 Dinas Kebudayaan Provinsi Bali

8	4
	B

Handwritten text in Balinese script on a palm leaf manuscript, consisting of two columns of text.

9	5
	A

Handwritten text in Balinese script on a palm leaf manuscript, consisting of two columns of text.

Janma Prawrti 1
Pusat Dokumentasi
Dinas Kebudayaan Provinsi Bali

9	5
	B

Handwritten text in Balinese script on a palm leaf manuscript strip. The text is arranged in two columns, with a small mark on the left side.

6	A
---	---

Handwritten text in Balinese script on a palm leaf manuscript strip. The text is arranged in two columns.

Janma Prawrti 1
Pusat Dokumentasi
Dinas Kebudayaan Provinsi Bali

6
B

Handwritten text in Balinese script on a palm leaf manuscript strip, divided into two columns by a central hole.

7
A

Handwritten text in Balinese script on a palm leaf manuscript strip, divided into two columns by a central hole.

Janma Prawrti 1
Pusat Dokumentasi
Dinas Kebudayaan Provinsi Bali

3	7
	B

Janma Prawrti 1 (top fragment) - A palm leaf manuscript strip with two columns of Balinese script. The text is written in a traditional style, likely a form of Balinese calendar or almanac.

3	8
	A

Janma Prawrti 1 (bottom fragment) - A palm leaf manuscript strip with two columns of Balinese script, continuing the text from the top fragment.

Janma Prawrti 1
 Pusat Dokumentasi
 Dinas Kebudayaan Provinsi Bali

8
 B

Handwritten text in Balinese script on a palm leaf manuscript strip, divided into two columns by a central hole.

9
 A

Handwritten text in Balinese script on a palm leaf manuscript strip, divided into two columns by a central hole.

Janma Prawrti 1
 Pusat Dokumentasi
 Dinas Kebudayaan Provinsi Bali

3	9
	B

Handwritten text on a palm leaf manuscript, likely a Janma Prawrti (birth record) from Bali. The text is written in Balinese script and is organized into two columns. The left column begins with a small symbol resembling a crescent moon and a star, followed by several lines of text. The right column also begins with a similar symbol and contains text. The leaf shows signs of age and wear, with some discoloration and small holes.

10
A

Handwritten text on a palm leaf manuscript, similar to the one above. It is written in Balinese script and is organized into two columns. The left column begins with a small symbol resembling a crescent moon and a star, followed by several lines of text. The right column also begins with a similar symbol and contains text. The leaf shows signs of age and wear, with some discoloration and small holes.

Janma Prawrti 1
 Pusat Dokumentasi
 Dinas Kebudayaan Provinsi Bali

10
B

Handwritten text on a palm leaf manuscript strip, likely a form of Balinese script (Kawista). The text is arranged in two columns, with a small character 'w' on the left margin. The script is finely etched into the surface of the dried leaf.

11
A

Handwritten text on a second palm leaf manuscript strip, continuing the script from the first strip. It also features two columns of text with a small character 'w' on the left margin. The leaf shows signs of age and wear.

Janma Prawrti 1
Pusat Dokumentasi
Dinas Kebudayaan Provinsi Bali

11
B

Handwritten text in Balinese script on a palm leaf manuscript strip, divided into two columns.

12
A

Handwritten text in Balinese script on a palm leaf manuscript strip, divided into two columns.

Janma Prawrti 1
 Pusat Dokumentasi
 Dinas Kebudayaan Provinsi Bali

12
 B

Handwritten text in Balinese script on a palm leaf manuscript strip. The text is arranged in two columns, with a small circular hole on the left side for binding. The script is finely etched into the surface of the dried leaf.

13
 B

Handwritten text in Balinese script on a palm leaf manuscript strip. The text is arranged in two columns, with a small circular hole on the left side for binding. The script is finely etched into the surface of the dried leaf.

Janma Prawrti 1
 Pusat Dokumentasi
 Dinas Kebudayaan Provinsi Bali

13
 A

Handwritten text on a palm leaf manuscript strip, likely containing a birth record (Janma Prawrti) in Balinese script.

14
 A

Handwritten text on a palm leaf manuscript strip, likely containing a birth record (Janma Prawrti) in Balinese script.

Janma Prawrti 1
 Pusat Dokumentasi
 Dinas Kebudayaan Provinsi Bali

14
B

Handwritten text on a palm leaf manuscript strip, likely a form of Balinese script (Kawista). The text is arranged in two columns and contains several lines of characters.

15
A

Handwritten text on a palm leaf manuscript strip, continuing the Balinese script. The text is arranged in two columns and contains several lines of characters.

Janma Prawrti 1
Pusat Dokumentasi
Dinas Kebudayaan Provinsi Bali

15
B

Handwritten text in Balinese script on a palm leaf manuscript strip, divided into two columns by a central hole.

16
A

Handwritten text in Balinese script on a palm leaf manuscript strip, divided into two columns by a central hole.

Janma Prawrti 1
 Pusat Dokumentasi
 Dinas Kebudayaan Provinsi Bali

16
 B

Handwritten text in Balinese script on a palm leaf manuscript strip. The text is arranged in two columns, with a small initial character on the left side.

17
 A

Handwritten text in Balinese script on a palm leaf manuscript strip. The text is arranged in two columns, with a small initial character on the left side.

Janma Prawrti 1
Pusat Dokumentasi
Dinas Kebudayaan Provinsi Bali

17
B

Handwritten text on a palm leaf manuscript strip, likely in Balinese script. The text is arranged in two columns, with a small mark on the left side.

18
A

Handwritten text on a palm leaf manuscript strip, likely in Balinese script. The text is arranged in two columns, with a small mark on the left side.

Janma Prawrti 1
Pusat Dokumentasi
Dinas Kebudayaan Provinsi Bali

ꦫꦮ 18
B

Handwritten Balinese script on a palm leaf manuscript strip, divided into two columns by a central hole. The text is written in a traditional style with dark ink on the natural brown color of the leaf.

ꦫꦮ 19
A

Handwritten Balinese script on a palm leaf manuscript strip, divided into two columns by a central hole. The text is written in a traditional style with dark ink on the natural brown color of the leaf.

Janma Prawrti 1
 Pusat Dokumentasi
 Dinas Kebudayaan Provinsi Bali

19
 B

Handwritten text in Balinese script on a palm leaf manuscript, consisting of two columns of text.

20
 A

Handwritten text in Balinese script on a palm leaf manuscript, consisting of two columns of text.

Janma Prawrti 1
 Pusat Dokumentasi
 Dinas Kebudayaan Provinsi Bali

20
 B

Handwritten text in Balinese script on a palm leaf, consisting of two columns of text.

21
 A

Handwritten text in Balinese script on a palm leaf, consisting of two columns of text.

Janma Prawrti 1
 Pusat Dokumentasi
 Dinas Kebudayaan Provinsi Bali

21
 B

Handwritten text in Balinese script on a palm leaf manuscript strip, divided into two columns by a central hole.

22
 A

Handwritten text in Balinese script on a palm leaf manuscript strip, divided into two columns by a central hole.

Janma Prawrti 1
Pusat Dokumentasi
Dinas Kebudayaan Provinsi Bali

22
B

Handwritten text in Balinese script on a palm leaf manuscript, divided into two columns by a central binding hole. The script is finely etched into the surface of the leaf.

23
A

Handwritten text in Balinese script on a palm leaf manuscript, divided into two columns by a central binding hole. The script is finely etched into the surface of the leaf.

Janma Prawrti 1
Pusat Dokumentasi
Dinas Kebudayaan Provinsi Bali

23
B

Handwritten text on a palm leaf manuscript strip, likely a form of Balinese script (Kawista).

24
A

Handwritten text on a palm leaf manuscript strip, likely a form of Balinese script (Kawista).

Janma Prawrti 1
 Pusat Dokumentasi
 Dinas Kebudayaan Provinsi Bali

24
 B

Handwritten text in Balinese script on a palm leaf manuscript, consisting of two columns of text.

25
 A

Handwritten text in Balinese script on a palm leaf manuscript, consisting of two columns of text.

Janma Prawrti 1
Pusat Dokumentasi
Dinas Kebudayaan Provinsi Bali

25
B

Handwritten text on a palm leaf manuscript, likely a birth record (Janma Prawrti) in Balinese script. The text is arranged in two columns on a single leaf. The left column begins with a small symbol and the number '25', and the right column begins with a small symbol and the letter 'B'. The script is dense and fills most of the leaf's surface.

26
A

Handwritten text on a palm leaf manuscript, likely a birth record (Janma Prawrti) in Balinese script. The text is arranged in two columns on a single leaf. The left column begins with a small symbol and the number '26', and the right column begins with a small symbol and the letter 'A'. The script is dense and fills most of the leaf's surface.

Janma Prawrti 1
Pusat Dokumentasi
Dinas Kebudayaan Provinsi Bali

26
B

Handwritten text in Balinese script on a palm leaf manuscript strip, divided into two columns by a central hole. The script is finely etched into the surface of the dried leaf.

27
A

Handwritten text in Balinese script on a palm leaf manuscript strip, divided into two columns by a central hole. The script is finely etched into the surface of the dried leaf.

Janma Prawrti 1
Pusat Dokumentasi
Dinas Kebudayaan Provinsi Bali

27
B

Handwritten text in Balinese script on a palm leaf manuscript strip, divided into two columns by a central hole.

28
A

Handwritten text in Balinese script on a palm leaf manuscript strip, divided into two columns by a central hole.

Janma Prawrti 1
Pusat Dokumentasi
Dinas Kebudayaan Provinsi Bali

B
28
28

Handwritten text on a palm leaf manuscript strip, likely in Balinese script. The text is arranged in two columns, with a small symbol at the top left.

29
A
29

Handwritten text on a palm leaf manuscript strip, likely in Balinese script. The text is arranged in two columns.

Janma Prawrti 1
Pusat Dokumentasi
Dinas Kebudayaan Provinsi Bali

29
B

Handwritten text in Balinese script on a palm leaf manuscript strip, divided into two columns.

30
A

Handwritten text in Balinese script on a palm leaf manuscript strip, divided into two columns.

Janma Prawrti 1
Pusat Dokumentasi
Dinas Kebudayaan Provinsi Bali

ꦱꦺ
30
B

Handwritten Balinese script on a palm leaf, consisting of two columns of text.

ꦱꦺ
31
A

Handwritten Balinese script on a palm leaf, consisting of two columns of text.

Janma Prawrti 1
Pusat Dokumentasi
Dinas Kebudayaan Provinsi Bali

31	31
	B

Handwritten text on a palm leaf manuscript strip, likely in Balinese script. The text is arranged in two columns, with a small circular hole visible on the left side.

32	32
	A

Handwritten text on a palm leaf manuscript strip, likely in Balinese script. The text is arranged in two columns, with a small circular hole visible on the left side.

Janma Prawrti 1
 Pusat Dokumentasi
 Dinas Kebudayaan Provinsi Bali

32
 B

Handwritten text in Balinese script on a palm leaf manuscript strip, divided into two columns by a central hole. The script is finely etched and follows the traditional right-to-left reading order.

33
 A

Handwritten text in Balinese script on a palm leaf manuscript strip, divided into two columns by a central hole. The script is finely etched and follows the traditional right-to-left reading order.

Janma Prawrti 1
Pusat Dokumentasi
Dinas Kebudayaan Provinsi Bali

၅၅
33
B

Handwritten text in Balinese script on a palm leaf manuscript strip. The text is arranged in approximately 10 horizontal lines across the length of the strip. There are two circular holes visible, one near the left end and one near the right end, used for binding multiple strips together.

၅၆
34
A

Handwritten text in Balinese script on a palm leaf manuscript strip. The text is arranged in approximately 10 horizontal lines across the length of the strip. There are two circular holes visible, one near the left end and one near the right end, used for binding multiple strips together.

Janma Prawrti 1
 Pusat Dokumentasi
 Dinas Kebudayaan Provinsi Bali

34
B

Handwritten text on a palm leaf manuscript strip, likely containing a birth record (Janma Prawrti) in Balinese script.

35
A

Handwritten text on a palm leaf manuscript strip, likely containing a birth record (Janma Prawrti) in Balinese script.

Janma Prawrti 1
Pusat Dokumentasi
Dinas Kebudayaan Provinsi Bali

35
B

Handwritten text in Balinese script on a palm leaf manuscript strip, divided into two columns by a central hole. The script is finely etched into the surface of the leaf.

36
A

Handwritten text in Balinese script on a palm leaf manuscript strip, divided into two columns by a central hole. The script is finely etched into the surface of the leaf.

Janma Prawrti 1
Pusat Dokumentasi
Dinas Kebudayaan Provinsi Bali

၅၅ 36
B

Handwritten text in Balinese script on a palm leaf manuscript strip, divided into two sections by a central hole.

၅၅ 37
A

Handwritten text in Balinese script on a palm leaf manuscript strip, divided into two sections by a central hole.

Janma Prawrti 1
Pusat Dokumentasi
Dinas Kebudayaan Provinsi Bali

37
B

Handwritten text in Balinese script on a palm leaf, divided into two columns. The script is finely etched and follows the natural curve of the leaf. The left column begins with a small decorative mark. The right column contains a date or specific reference, possibly '1000'.

38
A

Handwritten text in Balinese script on a palm leaf, divided into two columns. The script is finely etched and follows the natural curve of the leaf. The left column begins with a small decorative mark. The right column contains a date or specific reference, possibly '1000'.

Janma Prawrti 1
Pusat Dokumentasi
Dinas Kebudayaan Provinsi Bali

38
B

Handwritten text in Balinese script on a palm leaf manuscript strip, divided into two sections by a hole.

39
A

Handwritten text in Balinese script on a palm leaf manuscript strip, divided into two sections by a hole.

Janma Prawrti 1
 Pusat Dokumentasi
 Dinas Kebudayaan Provinsi Bali

39
B

Handwritten text on a palm leaf manuscript strip, likely containing a calendar or astronomical data. The text is written in Balinese script and is organized into two columns. The left column begins with a small symbol resembling a crescent moon and a star, followed by several lines of text. The right column also contains several lines of text. The script is finely etched into the surface of the dried leaf.

40
A

Handwritten text on a second palm leaf manuscript strip, continuing the content from the first strip. It is also written in Balinese script and is organized into two columns. The left column starts with a small symbol, and the right column continues the text. The leaf shows signs of age and wear, with some discoloration and small holes.

Janma Prawrti 1
 Pusat Dokumentasi
 Dinas Kebudayaan Provinsi Bali

80 40
 B

Handwritten text in Balinese script on a palm leaf manuscript strip, divided into two columns by a central hole. The script is finely etched and follows the traditional format of a Janma Prawrti (birth record).

81 41
 A

Handwritten text in Balinese script on a palm leaf manuscript strip, divided into two columns by a central hole. The script is finely etched and follows the traditional format of a Janma Prawrti (birth record).

Janma Prawrti 1
Pusat Dokumentasi
Dinas Kebudayaan Provinsi Bali

41
B

Handwritten text on a palm leaf manuscript strip, likely in Balinese script. The text is arranged in two columns.

42
A

Handwritten text on a palm leaf manuscript strip, likely in Balinese script. The text is arranged in two columns.

Janma Prawrti 1
Pusat Dokumentasi
Dinas Kebudayaan Provinsi Bali

ꦱ	42
B	

Handwritten text on a palm leaf manuscript strip, likely a form of Balinese script (Kawista). The text is arranged in two columns, with a small circular hole visible on the left side of the strip.

ꦱ	43
A	

Handwritten text on a palm leaf manuscript strip, likely a form of Balinese script (Kawista). The text is arranged in two columns, with a small circular hole visible on the left side of the strip.

Janma Prawrti 1
Pusat Dokumentasi
Dinas Kebudayaan Provinsi Bali

၅၅	43
	B

Handwritten text on a palm leaf manuscript strip, likely a form of Balinese script (Kawista). The text is arranged in two columns, with a small circular hole visible on the left side of the strip.

၅၆	44
	A

Handwritten text on a palm leaf manuscript strip, likely a form of Balinese script (Kawista). The text is arranged in two columns, with a small circular hole visible on the left side of the strip.

Janma Prawrti 1
 Pusat Dokumentasi
 Dinas Kebudayaan Provinsi Bali

88 44
 B

Handwritten text in Balinese script on a palm leaf manuscript strip. The text is arranged in two columns, with a small circular hole on the left side for binding. The script is finely etched into the surface of the dried leaf.

89 45
 A

Handwritten text in Balinese script on a palm leaf manuscript strip. The text is arranged in two columns, with a small circular hole on the left side for binding. The script is finely etched into the surface of the dried leaf.

Janma Prawrti 1
Pusat Dokumentasi
Dinas Kebudayaan Provinsi Bali

89
45
B

Handwritten text on a palm leaf manuscript strip, likely containing a list of names or titles in Balinese script.

88
46
A

Handwritten text on a palm leaf manuscript strip, continuing the list of names or titles in Balinese script.

Janma Prawrti 1
 Pusat Dokumentasi
 Dinas Kebudayaan Provinsi Bali

46
 B

Handwritten text in Balinese script on a palm leaf manuscript strip, divided into two columns.

47
 A

Handwritten text in Balinese script on a palm leaf manuscript strip, divided into two columns.

Janma Prawrti 1
Pusat Dokumentasi
Dinas Kebudayaan Provinsi Bali

47
B

Handwritten text in Balinese script on a palm leaf, consisting of two columns of text.

48
A

Handwritten text in Balinese script on a palm leaf, consisting of two columns of text.

Janma Prawrti 1
Pusat Dokumentasi
Dinas Kebudayaan Provinsi Bali

48
B

Handwritten text on a palm leaf manuscript strip, likely a form of Balinese script (Kawista). The text is arranged in two columns, with a small initial character on the left side of the first column.

49
A

Handwritten text on a palm leaf manuscript strip, likely a form of Balinese script (Kawista). The text is arranged in two columns, with a small initial character on the left side of the first column.

Janma Prawrti 1
Pusat Dokumentasi
Dinas Kebudayaan Provinsi Bali

ꦱ	49
	B

Handwritten text in Balinese script on a palm leaf, consisting of two columns of text.

ꦱ	50
	A

Handwritten text in Balinese script on a palm leaf, consisting of two columns of text.

Janma Prawrti 1
Pusat Dokumentasi
Dinas Kebudayaan Provinsi Bali

90	50
	B

Handwritten text in Balinese script on a palm leaf. The text is arranged in two lines. The first line contains approximately 15 characters, and the second line contains approximately 25 characters. There are three circular holes along the length of the leaf, likely for binding.

A second, blank palm leaf, showing natural wood grain and some minor dark spots, positioned below the first leaf.

Janma Prawrti 1
Pusat Dokumentasi
Dinas Kebudayaan Provinsi Bali

